



**Habitat
for Humanity®**
Greater Los Angeles

ReStore

WE NEED YOUR DONATIONS!



The ReStore was established to provide a self-sustaining funding source for Habitat for Humanity of Greater Los Angeles (HFH GLA) and to provide our local communities with low-cost building and home improvement materials.

- The ReStore accepts new, used, discontinued, or surplus building materials, appliances & home furnishings from companies, contractors, retailers, film and television studios and individuals.
- The ReStore sells donated items at drastically-reduced prices to the general public. All proceeds support HFH GLA's commitment to building and renovating homes in partnership with low-income, hard-working families and individuals in Greater Los Angeles.
- Trucks are sent out daily to pick-up items all over Los Angeles. Please contact a Donations Coordinator to arrange a pick-up of your donation by calling 866-SHOP-HFH. All donations are tax-deductible.



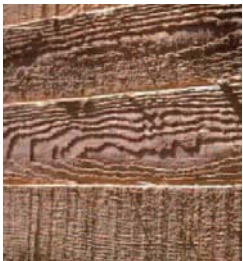
The Habitat ReStore accepts (*but is not limited to*) the following materials:

- A/C & Heating:** Less than 8 years old, whole house or window.
- Appliances:** Clean and in working condition, less than 8 years old.
- Brick & Block:** Neatly stacked and palletized, minimum quantity for block: 25; no broken pieces.
- Cabinets:** Only complete and modular cabinets with all doors and drawers, standard and special sizes, slight damage okay, already removed.
- Carpet:** New and unused, room-sized pieces or larger.
- Doors:** Interior and exterior doors; no broken glass or damaged wood; prefer hardware removed and bagged separately. No hollow, slab doors.
- Electrical:** Fixtures, parts, supplies, slight damage okay.
- Furniture:** Home, antique, no worn or stained upholstery, overall good condition.
- Hardware:** Knobs, hinges, locks, nails, screws, nuts & bolts and fasteners, prefer separated by type/style.
- Lumber:** Dimensional: 6 ft. or longer; sheets: 1/2 sheet or larger, free of rot, nails and screws. No scraps.
- Paint:** New, unused paint. Neutral colors preferred.
- Plumbing:** Clean and in usable condition, fixtures, parts & supplies accepted. Toilets should be completely clean and sanitized.
- Tile:** Wall and floor any size. Boxed and clean, unbroken. Minimum quantity: 20 sq. ft.
- Windows:** Vinyl or wood, new construction and retro-fits with dual pane glass. No aluminum-framed, single pane, broken glass or damaged wood frames.



We cannot accept used mattresses or box springs.

In accordance with the Consumer Product Safety Improvement Act, we can no longer accept any children's items.



ReStore – Gardena Location

17700 S. Figueroa St.
Gardena, CA 90248
866.SHOP.HFH

Deliveries accepted during store hours.

ReStore – Norwalk Location

11029 Alondra Blvd.
Norwalk, CA 90650
866.SHOP.HFH

Deliveries accepted during store hours.

ReStore Hours

(both locations):
Tuesday - Saturday: 9am– 6pm
www.shophabitat.org